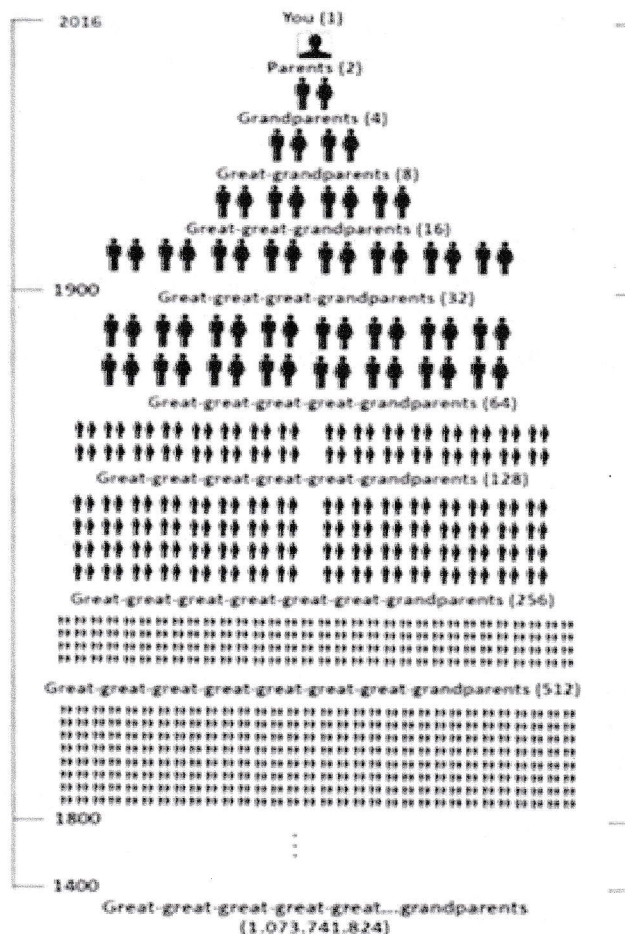


A whole new world is out there in the DNA ponds but how do I work out where I fit in?

As we work back from ourselves: there is One of us, We each have Two parents, Four grandparents, Eight great-grandparents. So on!

This binary arithmetic continues so at thirty generations, approximately 1000 years ago, we each have well over one billion ancestors. The world population 1,000 years ago was only 250-400million, so there may be multiple links to many ancestors.



You have 4 Grandparents. The children of your parent siblings (your aunts and uncles) are your 1st cousins. You have 8 Great Grandparents. Your Great Uncles' & Aunts' children are your 2nd cousins. You have 16 Great Great Grandparents. Your Great Great Uncles' & Aunts' children are your 3rd cousins. You have 32 Great Great Great Grandparents. Your Great Great Great Uncles' & Aunts' children are your 4th cousins.

You have 64 Great Great Great Great Grandparents. Your Great Great Great Great Uncles' & Aunts' children are your 5th cousins.

So we really only work up to 6th generation level. At this outer branch point you to find the common one; also remember the availability of historical records in